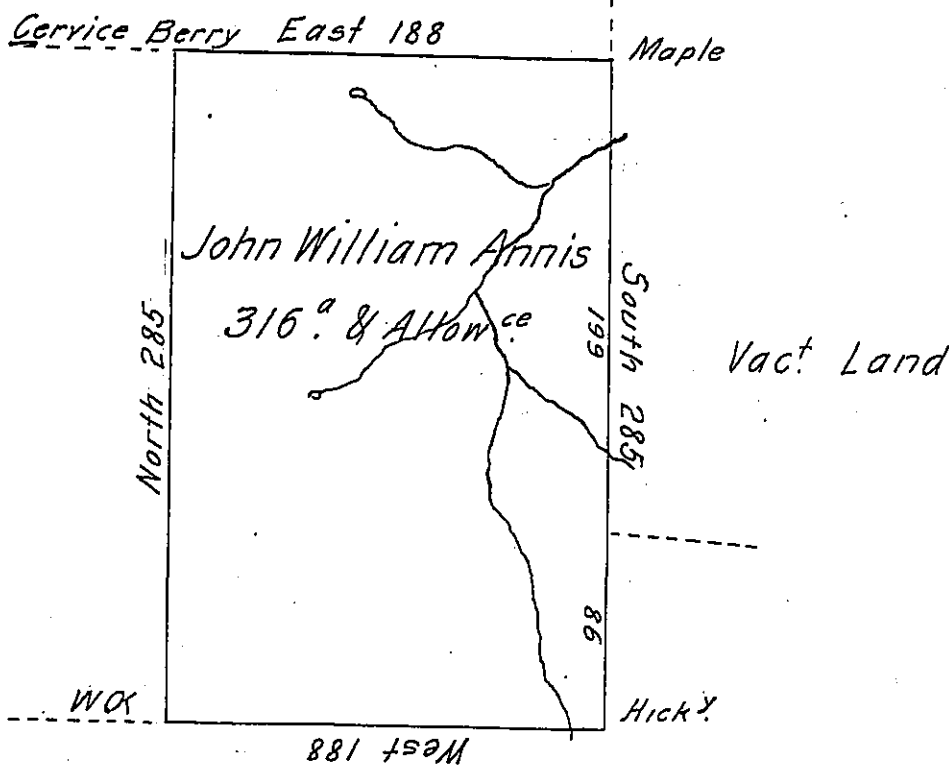


C185-36  
Sam<sup>l</sup> Robins



Joseph Williamson

Annis's Farm Survey'd to John William Annis on  
 the 8<sup>th</sup> day of October 1770. Containring Three hundred  
 & sixteen Acres & the usual Allowance of Six P<sup>ct</sup>  
 Situate on the Waters of two Lick Creek next above  
 Samuel Robins in the County of Westmoreland  
 By Warrant of the 4<sup>th</sup> day of August 1773.

P. Joshua Elder, D.S.

To John Lukens, Esq.<sup>r</sup>  
J. Genl.

Now in Indiana County, called  
"Annis's Farm"

IN TESTIMONY that the above is a copy of the original remaining on file in  
 the Department of Internal Affairs of Pennsylvania, made  
 conformably to an Act of Assembly approved the 16th day of  
 February, 1833, I have hereunto set my Hand and caused  
 the Seal of said Department to be affixed at Harrisburg,  
 this second day of July 1903.

*James A. Brown*  
 Secretary of Internal Affairs.